

# UniFi<sup>®</sup> | SECURITY GATEWAY

Enterprise Gateway Router with Gigabit Ethernet

Models: USG, USG-PRO-4

Advanced Security, Monitoring, and Management

Sophisticated Routing Features

Integrated with UniFi<sup>®</sup> Controller Software



# UniFi® SECURITY GATEWAY

## Affordable Enterprise Network Security

Ubiquiti Networks introduces the UniFi® Security Gateway, which extends the UniFi Enterprise System to encompass routing and security for your network.

The UniFi Security Gateway combines reliable security features with high-performance routing technology in a cost-effective unit.

Two models are available:

- **USG-PRO-4** Rack-mountable form factor with fiber connectivity options and a dual-core, 1 GHz processor for maximum hardware-accelerated performance.
- **USG** Wall-mountable form factor with a dual-core, 500 MHz processor for standard hardware-accelerated performance.

## Powerful Firewall Performance

The UniFi Security Gateway offers advanced firewall policies to protect your network and its data.

## Convenient VLAN Support

The UniFi Security Gateway can create virtual network segments for security and network traffic management.

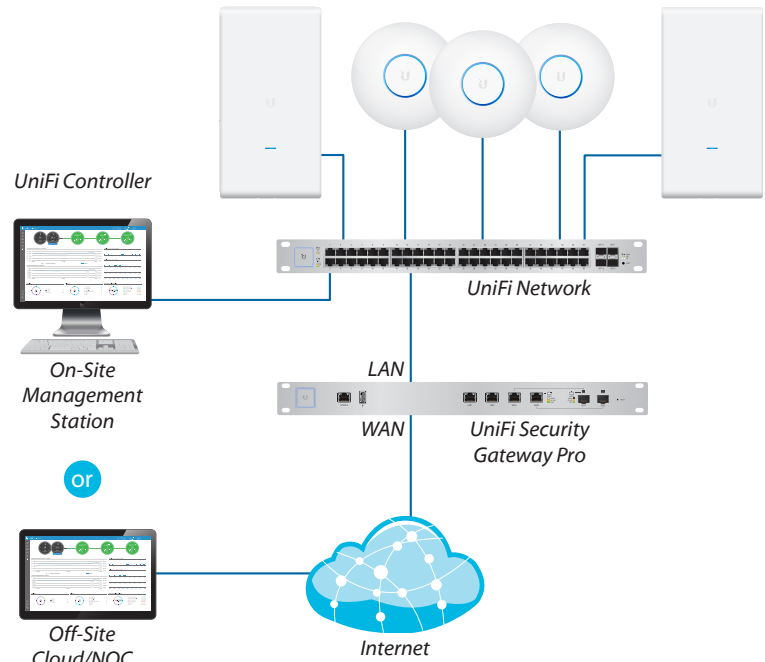
## VPN Server for Secure Communications

A site-to-site VPN secures and encrypts private data communications traveling over the Internet.

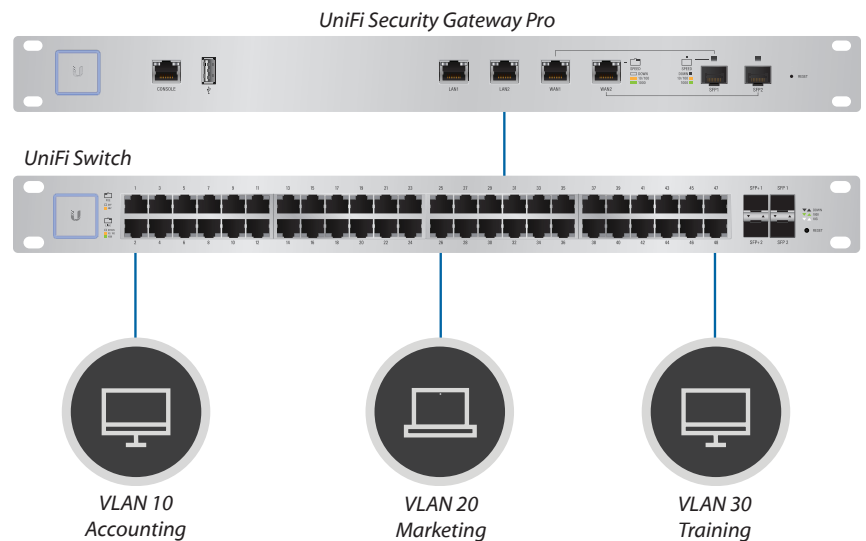
## QoS for Enterprise VoIP and Video

Top QoS priority is assigned to voice and video traffic for clear calls and lag-free, video streaming.

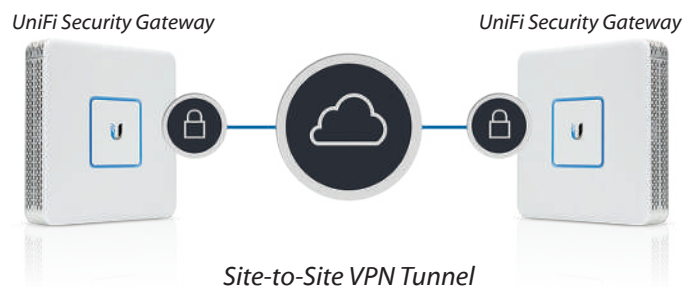
The UniFi Security Gateway is deployed in the same manner as UniFi Access Points for wireless networking. Use the intuitive UniFi Controller to conduct device detection, provisioning, and management.



Example of a UniFi Enterprise System



Network Segmentation with VLAN



Site-to-Site VPN Tunnel

# UniFi Controller

Introducing the new UniFi Controller software featuring a refreshed UI and support for the next generation of UniFi devices.

## Improved User Experience

Redesigned to be more intuitive and easier to navigate, the new UI raises the bar for enterprise network management efficiency. Important network details are logically organized for a simplified, yet powerful, interface.

## Packed with Features

Use the UniFi Controller to provision thousands of UniFi APs and UniFi Security Gateways, map out networks, quickly manage system traffic, and provision additional UniFi devices.

## Network Overview

A comprehensive overview of your Network Health is readily available in the new dashboard. Monitor your network's vitals and make on-the-fly adjustments as needed.

## Detailed Analytics

Use the configurable reporting and analytics to monitor large user groups and expedite troubleshooting. Advanced search and sorting capabilities make network management more efficient.

## Multi-Site Management

A single UniFi Controller running in the cloud can manage multiple sites: multiple, distributed deployments and multi-tenancy for managed service providers. Each site is logically separated and has its own configuration, maps, statistics, guest portal, and administrator read/write and read-only accounts.

## LAN/WLAN Groups

The UniFi Controller can manage flexible configurations of large deployments. Create multiple LAN and WLAN groups and assign them to the respective UniFi devices.



## Dashboard

UniFi provides a visual representation of your network's status and delivers basic information about each network segment.



## Maps

Upload a map of your location(s) or use Google Maps to represent the areas where your UniFi devices are located. Starting with v5.6.x, you can also use the predictive map feature to get a preview of coverage, so you can help avoid dead spots.

The Devices screen provides a detailed list of all managed UniFi devices. The table below shows the structure of the data presented:

Device Name	IP Address	Status	Model	MAC Address	Serial Number	Actions
Rack 020-Phy-0	192.168.1.1	Online	UniFi Security Gateway AP	42:31:40:28:27	3059-406	Configure   Monitor
Phy-05-10-100V	192.168.1.103	Online	UniFi Security Gateway AP	32:34:40:60	3059-406	Configure   Monitor
Devices 07-40-000V	192.168.1.101	Online	UniFi Security Gateway AP	32:34:40:60	3059-406	Configure   Monitor
Devices 08-40-000V	192.168.1.104	Online	UniFi Security Gateway AP	32:34:40:60	3059-406	Configure   Monitor
Phy-06-10-100V	192.168.1.102	Online	UniFi Security Gateway AP	32:34:40:60	3059-406	Configure   Monitor
Phy-04-10-100V	192.168.1.105	Online	UniFi Security Gateway AP	32:34:40:60	3059-406	Configure   Monitor
Phy-03-10-100V	192.168.1.106	Online	UniFi Security Gateway AP	32:34:40:60	3059-406	Configure   Monitor
Phy-02-10-100V	192.168.1.107	Online	UniFi Security Gateway AP	32:34:40:60	3059-406	Configure   Monitor
Phy-01-10-100V	192.168.1.108	Online	UniFi Security Gateway AP	32:34:40:60	3059-406	Configure   Monitor
Managed LAN APs	192.168.1.109	Online	UniFi Security Gateway AP	32:34:40:60	3059-406	Configure   Monitor
AC Pro-Chassis	192.168.1.110	Online	UniFi Security Gateway AP	32:34:40:60	3059-406	Configure   Monitor
Tronix	192.168.1.111	Online	UniFi Security Gateway AP	32:34:40:60	3059-406	Configure   Monitor
Link	192.168.1.112	Online	UniFi Security Gateway AP	32:34:40:60	3059-406	Configure   Monitor
300g	192.168.1.113	Online	UniFi Security Gateway AP	32:34:40:60	3059-406	Configure   Monitor
Phy	192.168.1.114	Online	UniFi Security Gateway AP	32:34:40:60	3059-406	Configure   Monitor
Phy	192.168.1.115	Online	UniFi Security Gateway AP	32:34:40:60	3059-406	Configure   Monitor
Phy	192.168.1.116	Online	UniFi Security Gateway AP	32:34:40:60	3059-406	Configure   Monitor
Phy	192.168.1.117	Online	UniFi Security Gateway AP	32:34:40:60	3059-406	Configure   Monitor
Phy	192.168.1.118	Online	UniFi Security Gateway AP	32:34:40:60	3059-406	Configure   Monitor
Phy	192.168.1.119	Online	UniFi Security Gateway AP	32:34:40:60	3059-406	Configure   Monitor
Phy	192.168.1.120	Online	UniFi Security Gateway AP	32:34:40:60	3059-406	Configure   Monitor
Phy	192.168.1.121	Online	UniFi Security Gateway AP	32:34:40:60	3059-406	Configure   Monitor
Phy	192.168.1.122	Online	UniFi Security Gateway AP	32:34:40:60	3059-406	Configure   Monitor
Phy	192.168.1.123	Online	UniFi Security Gateway AP	32:34:40:60	3059-406	Configure   Monitor
Phy	192.168.1.124	Online	UniFi Security Gateway AP	32:34:40:60	3059-406	Configure   Monitor
Phy	192.168.1.125	Online	UniFi Security Gateway AP	32:34:40:60	3059-406	Configure   Monitor

## Device Configuration

The Devices screen displays a list of UniFi devices discovered by the UniFi Controller. You can access each managed device for device details and configuration.

# UniFi® | SECURITY GATEWAY PRO

## Model: USG-PRO-4

The USG-PRO-4 offers optional SFP ports for fiber connectivity to support backhaul applications.

- (2) 10/100/1000 RJ45 LAN Ports
- (2) 1 Gbps RJ45/SFP Combination WAN Ports\*
- (1) RJ45 Serial Console Port
- Rack-Mounting Capability
- Layer 3 Forwarding Performance
- Packet Size of 64 Bytes: 2,400,000 pps
- Packet Size of 512 Bytes or Larger: 4 Gbps (Line Rate)

\* The USG-PRO-4 WAN port, as a result of being a combination SFP/GigE port, is a pure 1 Gbps port – it is incapable of both 10 Mbps and 100 Mbps FDX/HDX settings.



Front Panel



Back Panel

# UniFi® | SECURITY GATEWAY

## Model: USG

The USG features a compact form factor and fanless operation for discreet integration.

- (3) 10/100/1000 RJ45 Ports\*
- (1) RJ45 Serial Console Port
- Quiet, Fanless Operation
- Wall-Mounting Capability
- Layer 3 Forwarding Performance
  - Packet Size of 64 Bytes: 1,000,000 pps
  - Packet Size of 512 Bytes or Larger: 3 Gbps (Line Rate)

\* VOIP port is available for port remapping in UniFi v5.



Top Panel



Front Panel

# Specifications

UniFi USG-PRO-4	
Dimensions	484 x 44 x 164 mm (19.06 x 1.73 x 6.46")
Weight	2.3 kg (5.07 lb)
Max. Power Consumption	40W
Power Supply	Internal AC/DC Power Adapter, 60W (24V, 2.5A)
Power Input	110 - 240VAC
LEDs	Status
System	Speed/Link/Activity
Data Ports	
Networking Interfaces	
Serial Console Port	(1) RJ45 Serial Port
Data Ports	(2) 10/100/1000 RJ45 LAN Ports (2) 1 Gbps RJ45/SFP Combination WAN Ports
Layer 3 Forwarding Performance	
Packet Size: 64 Bytes	2,400,000 pps
Packet Size: 512 Bytes or Larger	4 Gbps (Line Rate)
Processor	Dual-Core 1 GHz, MIPS64 with Hardware Acceleration for Packet Processing
System Memory	2 GB DDR3 RAM
On-Board Flash Storage	4 GB
Certifications	CE, FCC, IC
Rackmount	Yes
Operating Temperature	-10 to 45° C (14 to 113° F)
Operating Humidity	10 to 90% Noncondensing



## Specifications

UniFi USG	
Dimensions	135 x 135 x 28.3 mm (5.32 x 5.32 x 1.11")
Weight	366 g (12.9 oz)
Max. Power Consumption	7W
Power Supply	12VDC, 1A Power Adapter (Included)
Power Input	9 to 24VDC, Supported Voltage Range
LEDs	Status
System	Power
Serial Console Port	Speed/Link/Activity
Data Ports	
Networking Interfaces	
Serial Console Port	(1) RJ45 Serial Port
Data Ports	(3) 10/100/1000 Ethernet Ports*
Layer 3 Forwarding Performance	
Packet Size: 64 Bytes	1,000,000 pps
Packet Size: 512 Bytes or Larger	3 Gbps (Line Rate)
Processor	Dual-Core 500 MHz, MIPS64 with Hardware Acceleration for Packet Processing
System Memory	512 MB DDR2 RAM
On-Board Flash Storage	2 GB
Certifications	CE, FCC, IC
Wall-Mountable	Yes
Operating Temperature	-10 to 45° C (14 to 113° F)
Operating Humidity	10 to 90% Noncondensing

\* VOIP port is available for port remapping in UniFi v5.



Specifications are subject to change. Ubiquiti products are sold with a limited warranty described at: [www.ubnt.com/support/warranty](http://www.ubnt.com/support/warranty)  
 ©2014-2017 Ubiquiti Networks, Inc. All rights reserved. Ubiquiti, Ubiquiti Networks, the Ubiquiti U logo, the Ubiquiti beam logo, and UniFi are trademarks or registered trademarks of Ubiquiti Networks, Inc. in the United States and in other countries. All other trademarks are the property of their respective owners.



[www.ubnt.com](http://www.ubnt.com)